



LAKEWOOD CENTER

801-815 NE Lakewood Boulevard, Lee's Summit, MO



LEASE RATE: \$25/SF NNN | 1,200 SF TO 2,400 SF SPACES

DEMOGRAPHICS

	1 mile	3 miles	5 miles
Estimated Population	4,843	32,772	117,062
Avg. Household Income	\$168,357	\$111,172	\$92,709

- Neighborhood Center
- Surrounded by 5,000+ homes
- End cap space and in-line space
- ATM site available
- Join Pina Liquors, Mr Goodcents, LOCAL, and The Local Pizzeria



CLICK HERE TO VIEW MORE LISTING INFORMATION

For More Information Contact:

RYAN CLINE | 816.412.7330 | rcline@blockandco.com

BILL MAAS, CCIM | 816.412.7392 | bmaas@blockandco.com

Exclusive Agents

PHOTOS

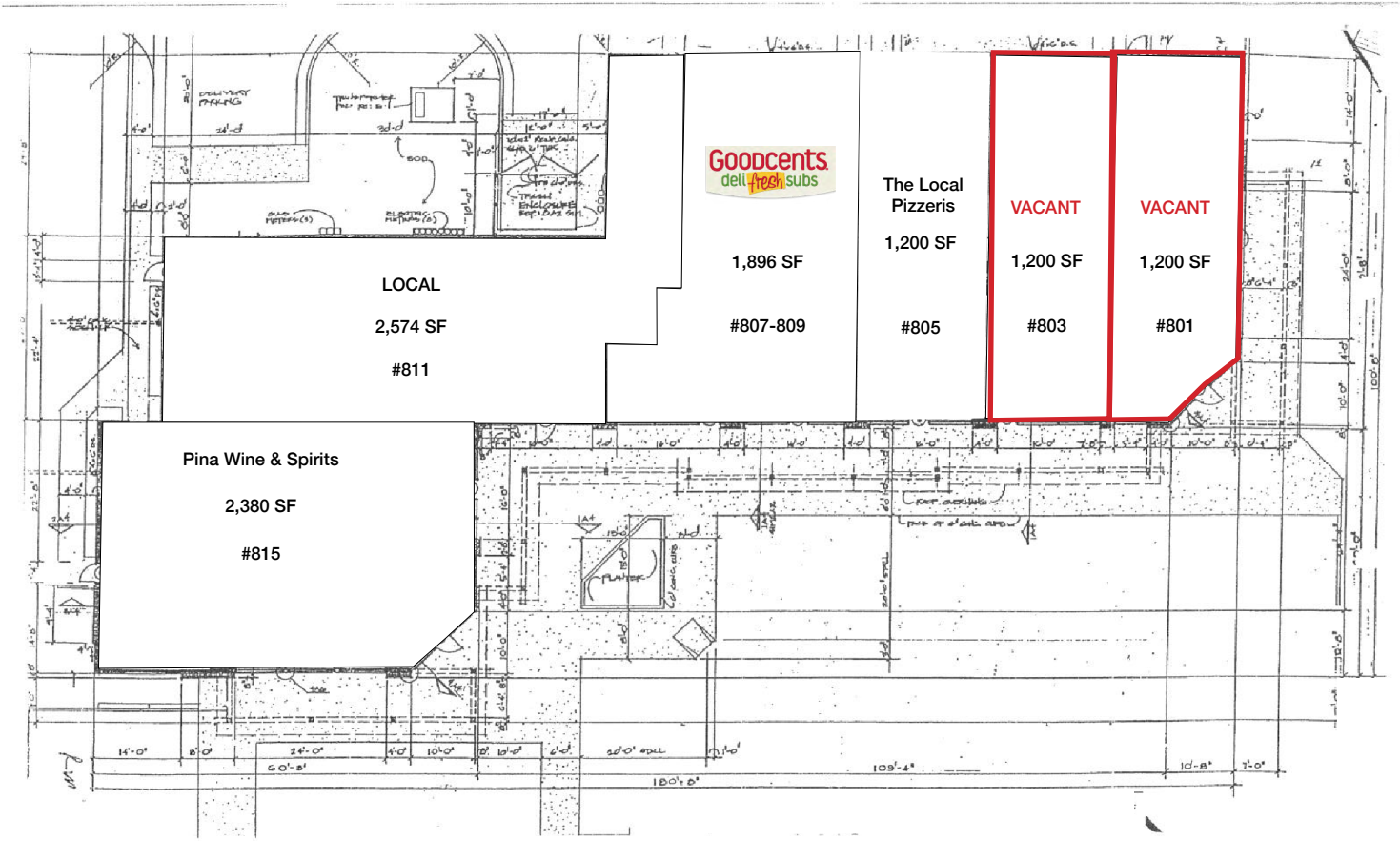




LAKEWOOD CENTER

801-815 NE Lakewood Boulevard, Lee's Summit, MO

SITE PLAN





LAKEWOOD CENTER

801-815 NE Lakewood Boulevard, Lee's Summit, MO

AERIAL

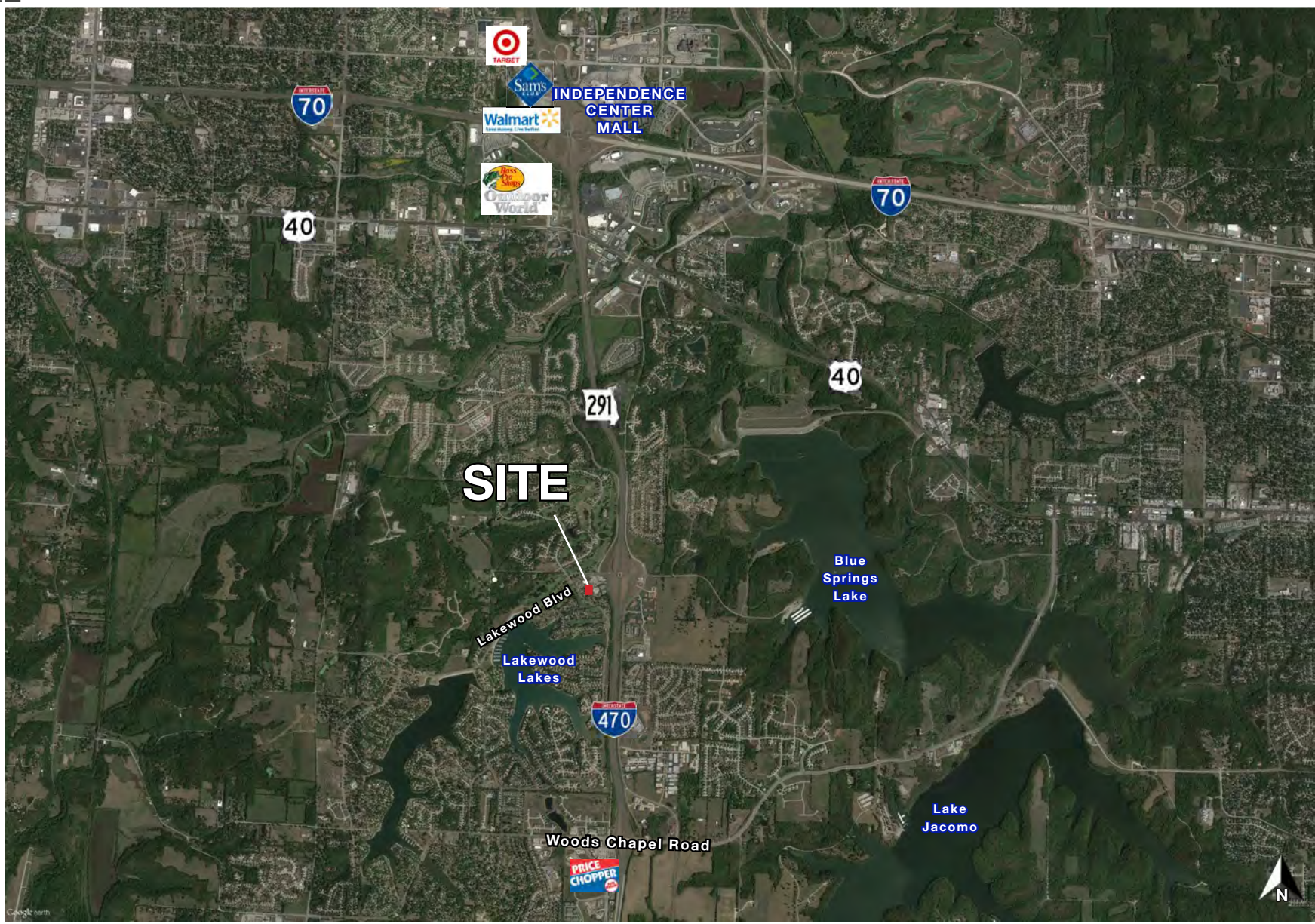




LAKEWOOD CENTER

801-815 NE Lakewood Boulevard, Lee's Summit, MO

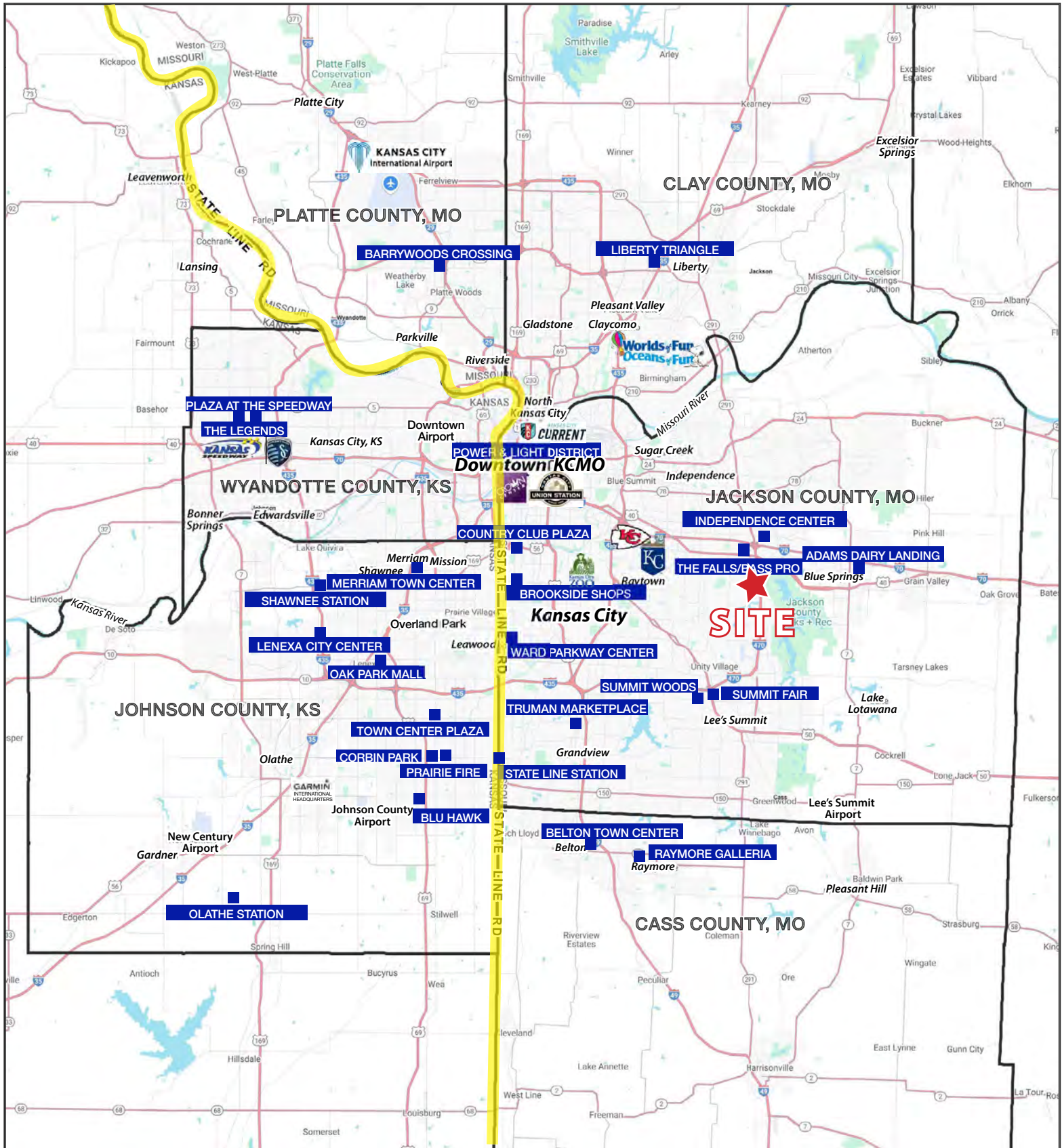
AERIAL

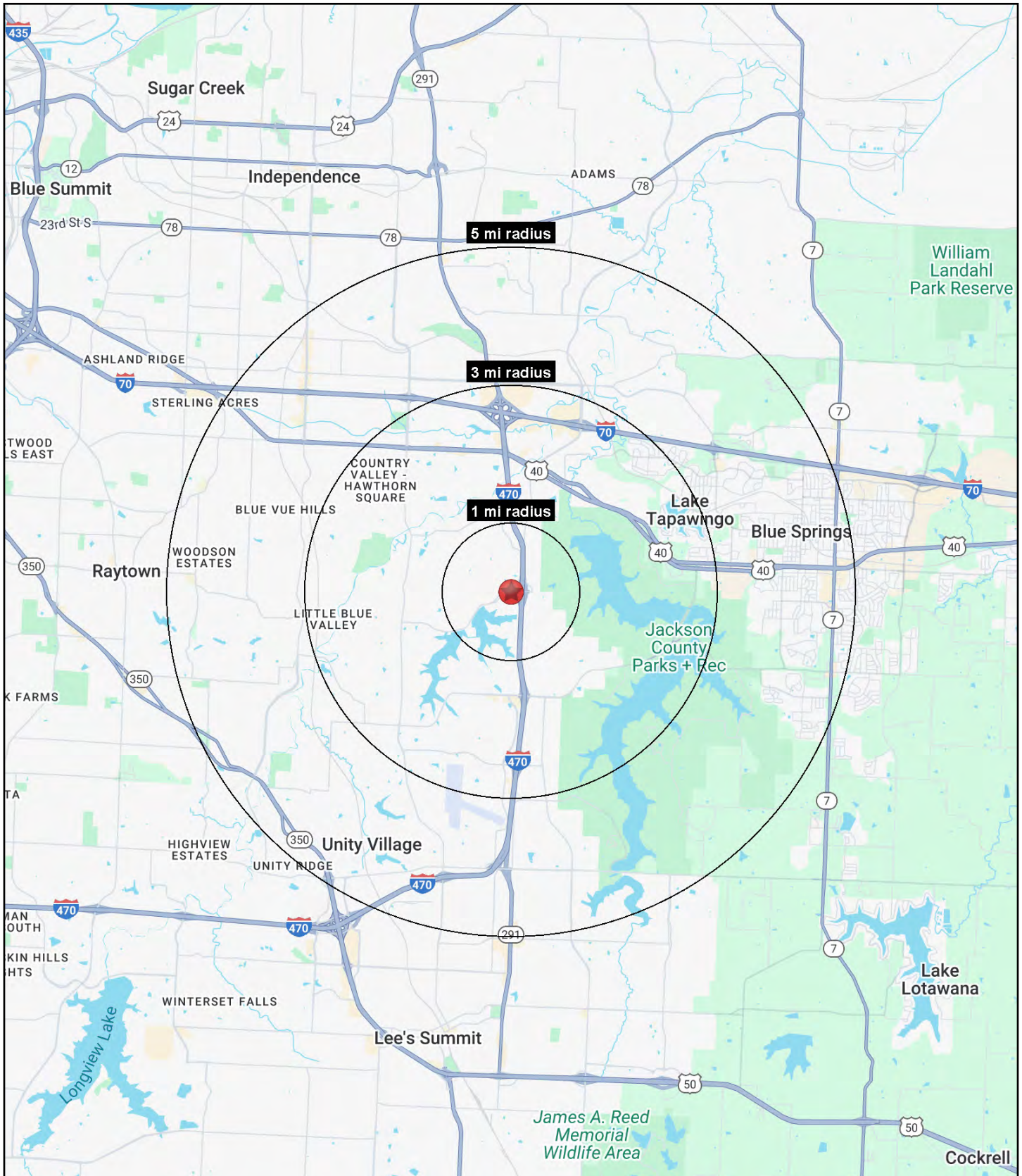


All information furnished regarding property for sale or lease is from sources deemed reliable, but no warranty or representation is made as to the accuracy thereof and the same is subject to errors, omissions, changes of prices, rental or other conditions, prior sale or lease or withdrawal without notice.

LAKEWOOD CENTER

801-815 NE Lakewood Boulevard, Lee's Summit, MO







LAKEWOOD CENTER

801-815 NE Lakewood Boulevard, Lee's Summit, MO

801-815 NE Lakewood Boulevard Lee's Summit, MO 64064	1 mi radius	3 mi radius	5 mi radius
Population			
2025 Estimated Population	5,070	32,082	113,431
2030 Projected Population	5,376	32,909	114,230
2020 Census Population	5,047	32,219	117,185
2010 Census Population	4,457	28,530	108,111
Projected Annual Growth 2025 to 2030	1.2%	0.5%	0.1%
Historical Annual Growth 2010 to 2025	0.9%	0.8%	0.3%
2025 Median Age	43.6	44.1	41.3
Households			
2025 Estimated Households	1,925	13,285	46,426
2030 Projected Households	2,050	13,708	47,048
2020 Census Households	1,915	13,059	47,075
2010 Census Households	1,667	11,370	43,150
Projected Annual Growth 2025 to 2030	1.3%	0.6%	0.3%
Historical Annual Growth 2010 to 2025	1.0%	1.1%	0.5%
Race and Ethnicity			
2025 Estimated White	81.1%	77.5%	75.3%
2025 Estimated Black or African American	10.2%	12.6%	13.6%
2025 Estimated Asian or Pacific Islander	3.2%	2.5%	2.1%
2025 Estimated American Indian or Native Alaskan	0.1%	0.2%	0.3%
2025 Estimated Other Races	5.3%	7.2%	8.6%
2025 Estimated Hispanic	4.8%	6.6%	8.1%
Income			
2025 Estimated Average Household Income	\$171,722	\$124,134	\$110,038
2025 Estimated Median Household Income	\$144,489	\$97,992	\$86,867
2025 Estimated Per Capita Income	\$65,231	\$51,568	\$45,123
Education (Age 25+)			
2025 Estimated Elementary (Grade Level 0 to 8)	1.0%	1.8%	1.7%
2025 Estimated Some High School (Grade Level 9 to 11)	0.8%	2.6%	2.9%
2025 Estimated High School Graduate	11.1%	23.7%	27.5%
2025 Estimated Some College	17.9%	23.2%	23.5%
2025 Estimated Associates Degree Only	6.0%	6.4%	8.8%
2025 Estimated Bachelors Degree Only	37.7%	25.4%	21.9%
2025 Estimated Graduate Degree	25.5%	16.8%	13.8%
Business			
2025 Estimated Total Businesses	218	1,624	4,741
2025 Estimated Total Employees	1,504	16,178	40,670
2025 Estimated Employee Population per Business	6.9	10.0	8.6
2025 Estimated Residential Population per Business	23.3	19.8	23.9